



PORT METRO  
**vancouver**

# **CREATING SUSTAINABLE PROSPERITY**

B.C. Expropriation  
Association  
Fall Conference

November 1, 2013

Tom Corsie,  
*Vice-President,  
Real Estate*

An aerial photograph of the Port Metro Vancouver area, showing the city of Vancouver, the harbor, and the surrounding landscape. The port facilities, including piers, docks, and shipping lanes, are visible. The city's urban grid is seen on the left, and the surrounding hills and water are on the right.

## PORT METRO VANCOUVER CONTEXT

- Canada's largest gateway to the Asia-Pacific region
- 4<sup>th</sup> largest tonnage port in North America
- Connects Canadians with trading partners in 160 economies
- Approx. \$475 million of cargo moved daily



PORT METRO  
**vancouver**





## GOVERNANCE

- Non-shareholder, financially self-sufficient corporation
- Canada Marine Act obligations
- Governed by a diverse board of 11 directors
- Guided by a vision for long-term growth and competitiveness, benefiting communities locally and across the nation.



PORT METRO  
vancouver

# OUR JURISDICTION

- 640 kilometres of shoreline
- 16 municipalities
- One treaty First Nation, several other First Nations
- Region of 2.3 million people





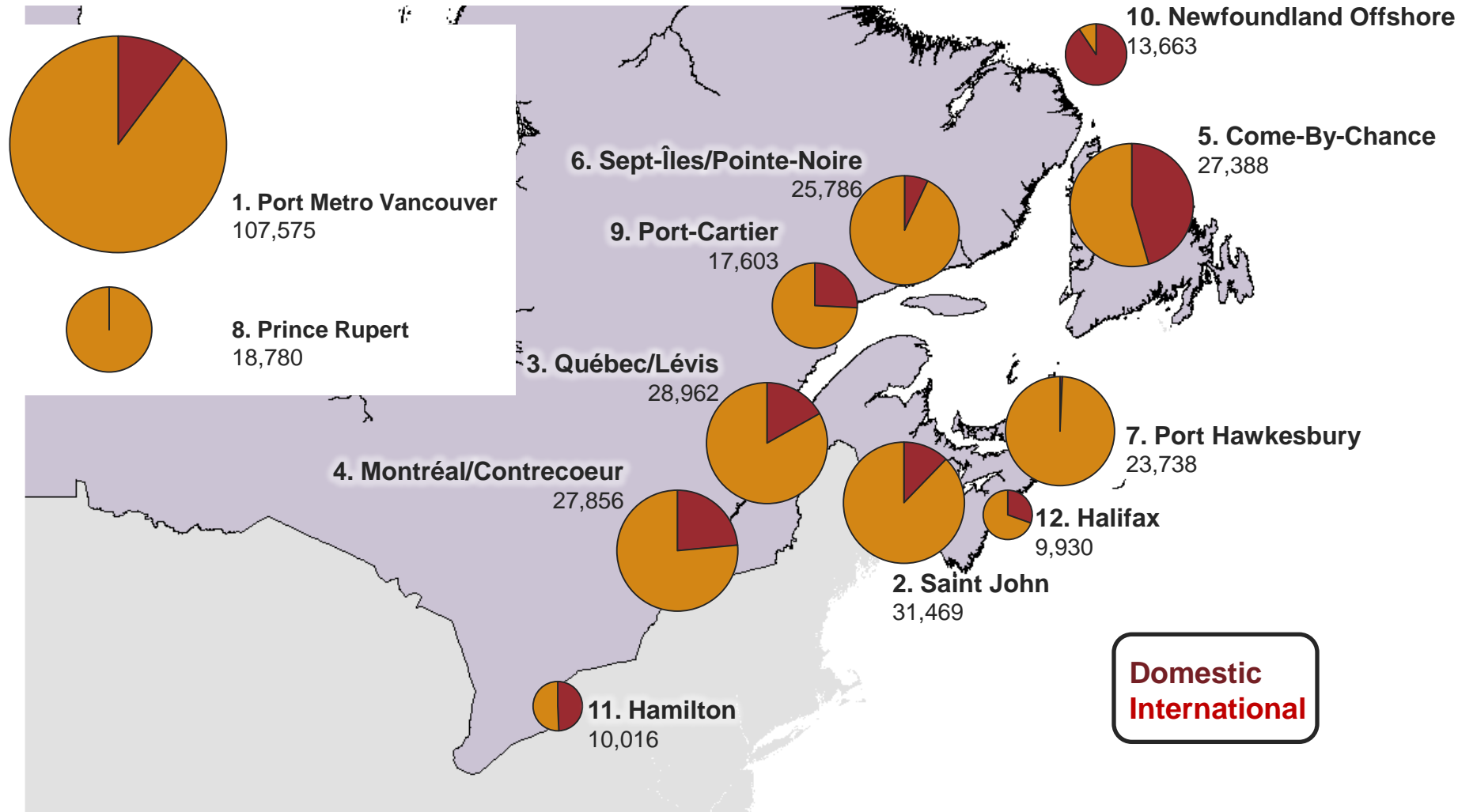
# OPERATIONS & ASSETS

- 28 major marine cargo terminals
- 3,081 vessel calls in 2012
- Serviced by 3 major railways
- Administration of 16,000 hectares of water and nearly 1,000 hectares of land and assets



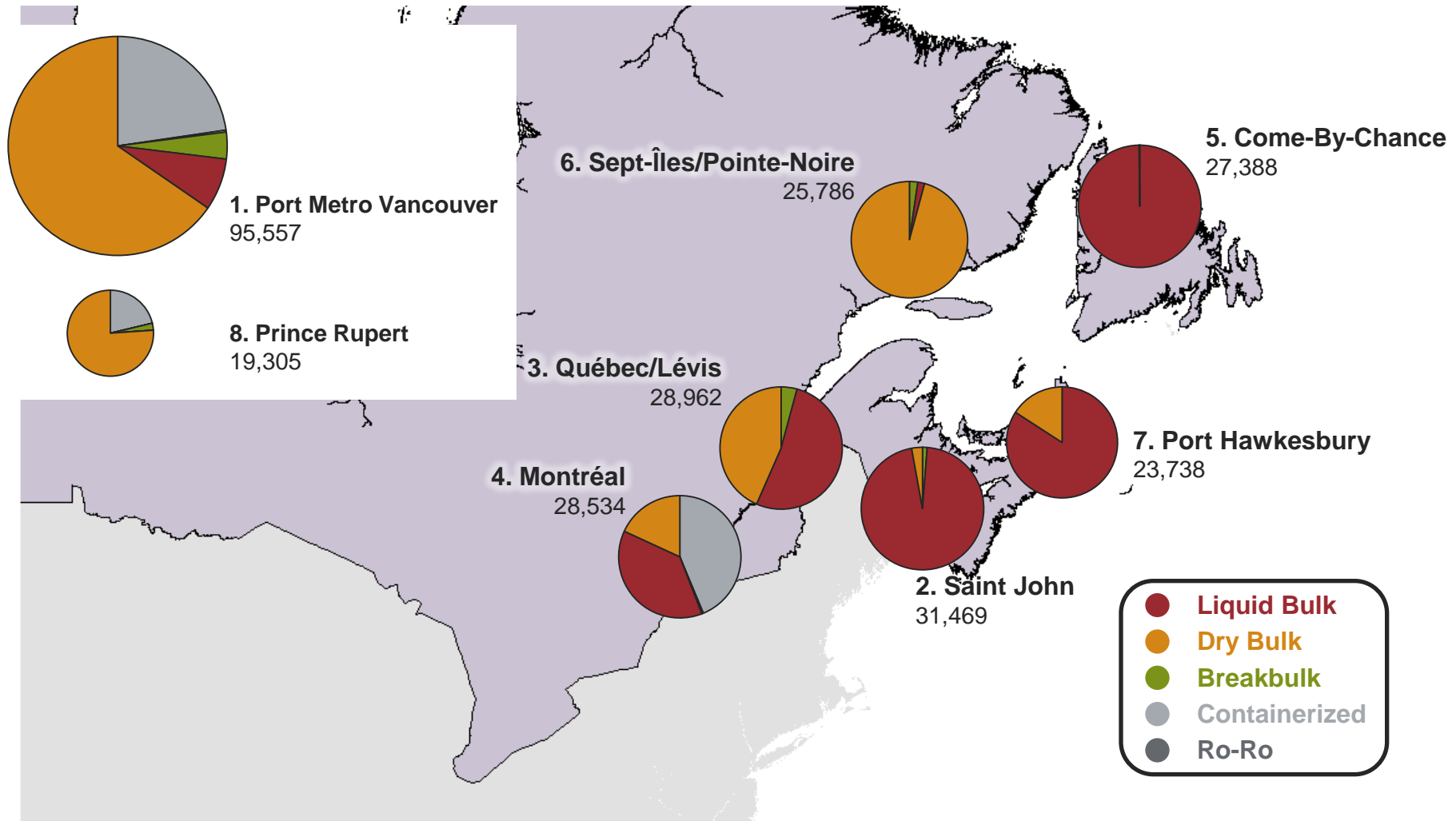
PORT METRO  
**vancouver**

# Top 12 Canadian Ports in Cargo Tonnage Domestic and International ('000 t) 2011





# Top 8 Canadian Ports: Cargo Tonnage And Type ('000 t) 2011



## 2012 STATS | CONTINUING GROWTH

- 124 million tonnes of cargo:
  - 96.8 million tonnes foreign tonnage
  - 27.1 million tonnes domestic tonnage
- Volumes reflect growth in Asian economies, continuing strength of Canada
- 6% growth mid-year 2013 vs mid-year 2012



PORT METRO  
**vancouver**





## ECONOMIC IMPACT

- 98,800 total jobs across Canada
- 76,800 jobs in British Columbia
- \$9.7 billion in GDP
- \$20.3 billion in economic output
- \$6.1 billion in wages
- \$172.4 billion in cargo value handled annually
  - 19% of Canada's total goods trade

98,800 jobs

## WHERE WE ARE TODAY

- Solid Canadian economy
- Balanced trade
- Opportunity for growth
- Infrastructure projects well underway
- Historic labour agreements
- Significantly improved performance
- Sustainable growth, environmental stewardship



PORT METRO  
**vancouver**

good fundamentals





collaboration



PORT METRO  
vancouver





# BUILDING THE PROVINCE, CREATING CAPACITY

- **Trade Areas**
  - North Shore
  - South Shore
  - Roberts Bank Rail Corridor
- **Container Capacity Improvement Program**
  - Deltaport Terminal, Road & Rail Project
  - Roberts Bank Terminal 2
- **Tenant-led projects**
- **Regional investments**
  - Port Mann Highway 1
  - South Fraser Perimeter Road





## INFRASTRUCTURE INVESTMENT

### • Trade Areas

- North Shore
- South Shore
- Roberts Bank Rail Corridor

Investment from  
funding partners of  
more than \$700  
million



PORT METRO  
**vancouver**



## NORTH SHORE TRADE AREA

- \$283 million
- 6 projects
- Industry investment up to \$59 million
- Enables major private sector investments
- Will add 60% to 80% to the existing rail corridor capacity



# LOW LEVEL ROAD PROJECT – PROGRESS PHOTOS



PORT METRO  
**vancouver**

[portmetrovancover.com](http://portmetrovancover.com)



# LOW LEVEL ROAD PROJECT – PROGRESS PHOTOS



PORT METRO  
vancouver

[portmetrovancover.com](http://portmetrovancover.com)



# LOW LEVEL ROAD PROJECT – PROGRESS PHOTOS



Date: October 4, 2012

William Jans wrjphoto.com



PORT METRO  
**vancouver**

[portmetrovancover.com](http://portmetrovancover.com)



# LOW LEVEL ROAD PROJECT – PROGRESS PHOTOS



PORT METRO  
**vancouver**

[portmetrovancover.com](http://portmetrovancover.com)



# LOW LEVEL ROAD PROJECT – PROGRESS PHOTOS



Date: September 3, 2013

William Jans wrjphoto.com



PORT METRO  
vancouver

[portmetrovancover.com](http://portmetrovancover.com)



# LOW LEVEL ROAD PROJECT – PROGRESS PHOTOS



PORT METRO  
vancouver

[portmetrovancover.com](http://portmetrovancover.com)



## SOUTH SHORE TRADE AREA

- \$127 million
- 2 projects
- Industry investment up to \$58 million
- Will add 50% to the existing rail corridor capacity

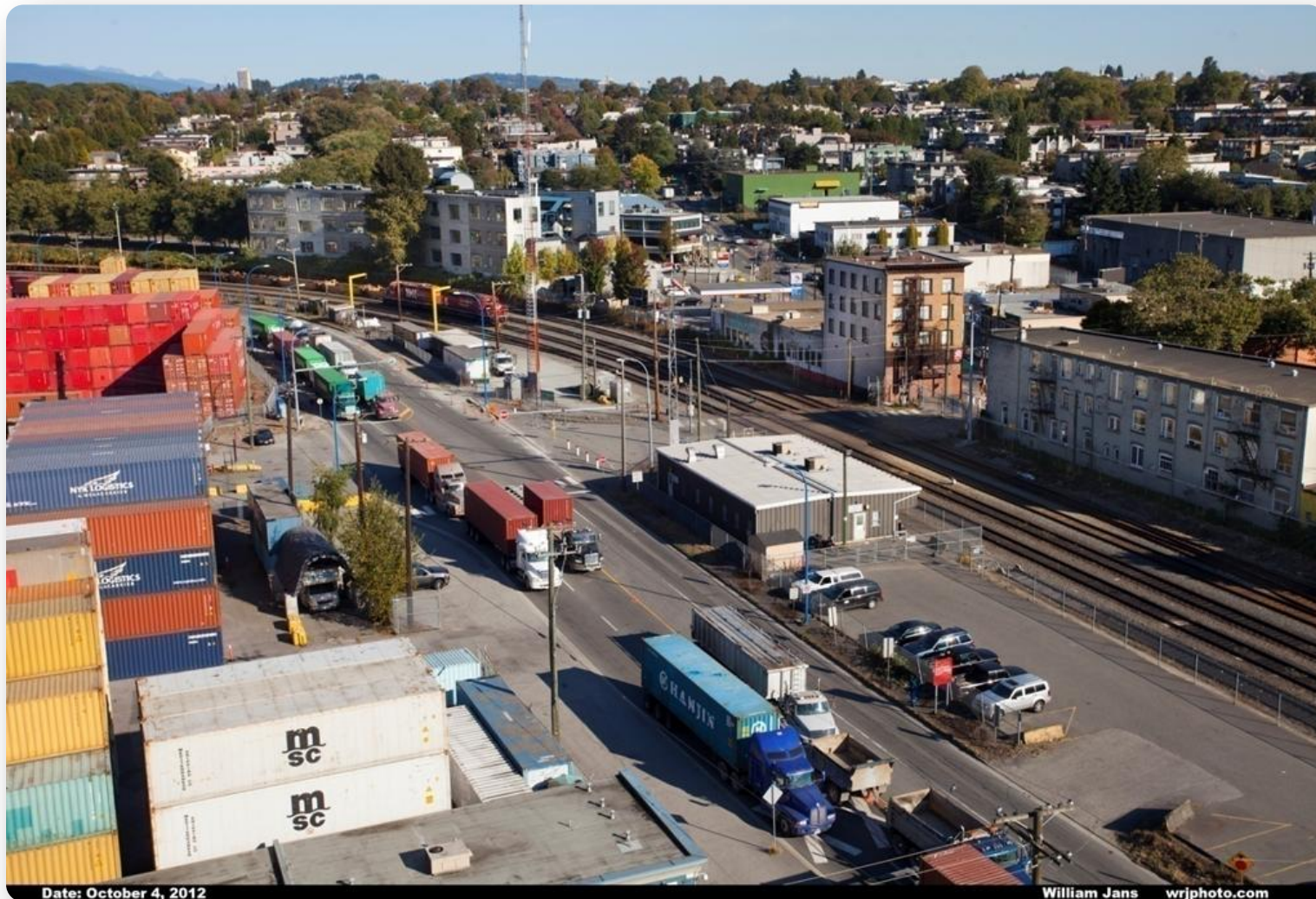
Improvement



PORT METRO  
**vancouver**



# SOUTH SHORE CORRIDOR PROJECT – PROGRESS PHOTOS

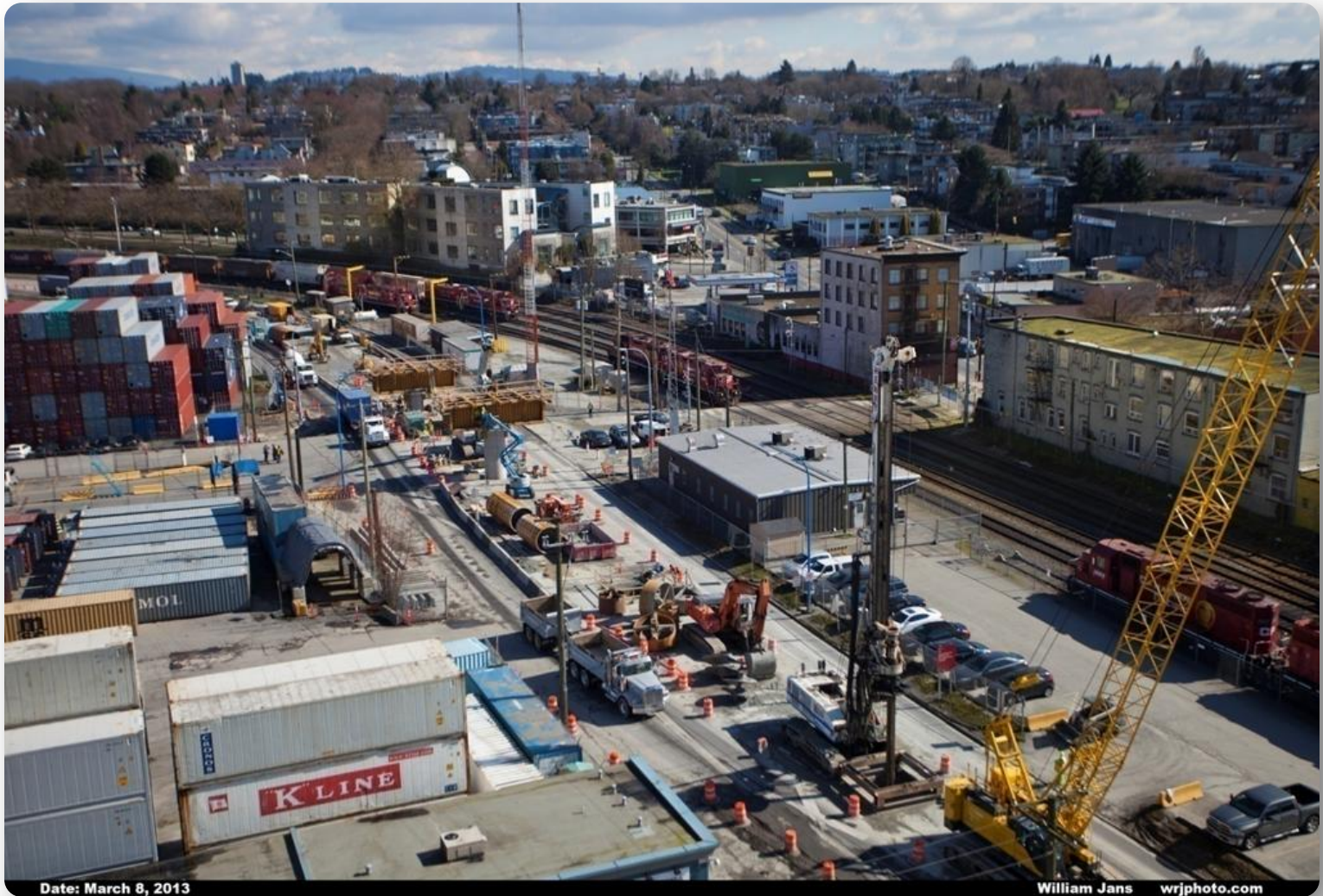


PORT METRO  
vancouver

[portmetrovancover.com](http://portmetrovancover.com)



# SOUTH SHORE CORRIDOR PROJECT – PROGRESS PHOTOS



Date: March 8, 2013

William Jans wrjphoto.com



PORT METRO  
vancouver

[portmetrovancover.com](http://portmetrovancover.com)



# SOUTH SHORE CORRIDOR PROJECT – PROGRESS PHOTOS



PORT METRO  
vancouver

portmetrovancover.com



# SOUTH SHORE CORRIDOR PROJECT – PROGRESS PHOTOS



PORT METRO  
**vancouver**

[portmetrovancover.com](http://portmetrovancover.com)

# SOUTH SHORE CORRIDOR PROJECT – PROGRESS PHOTOS



Date: August 30, 2013

William Jans wrjphoto.com

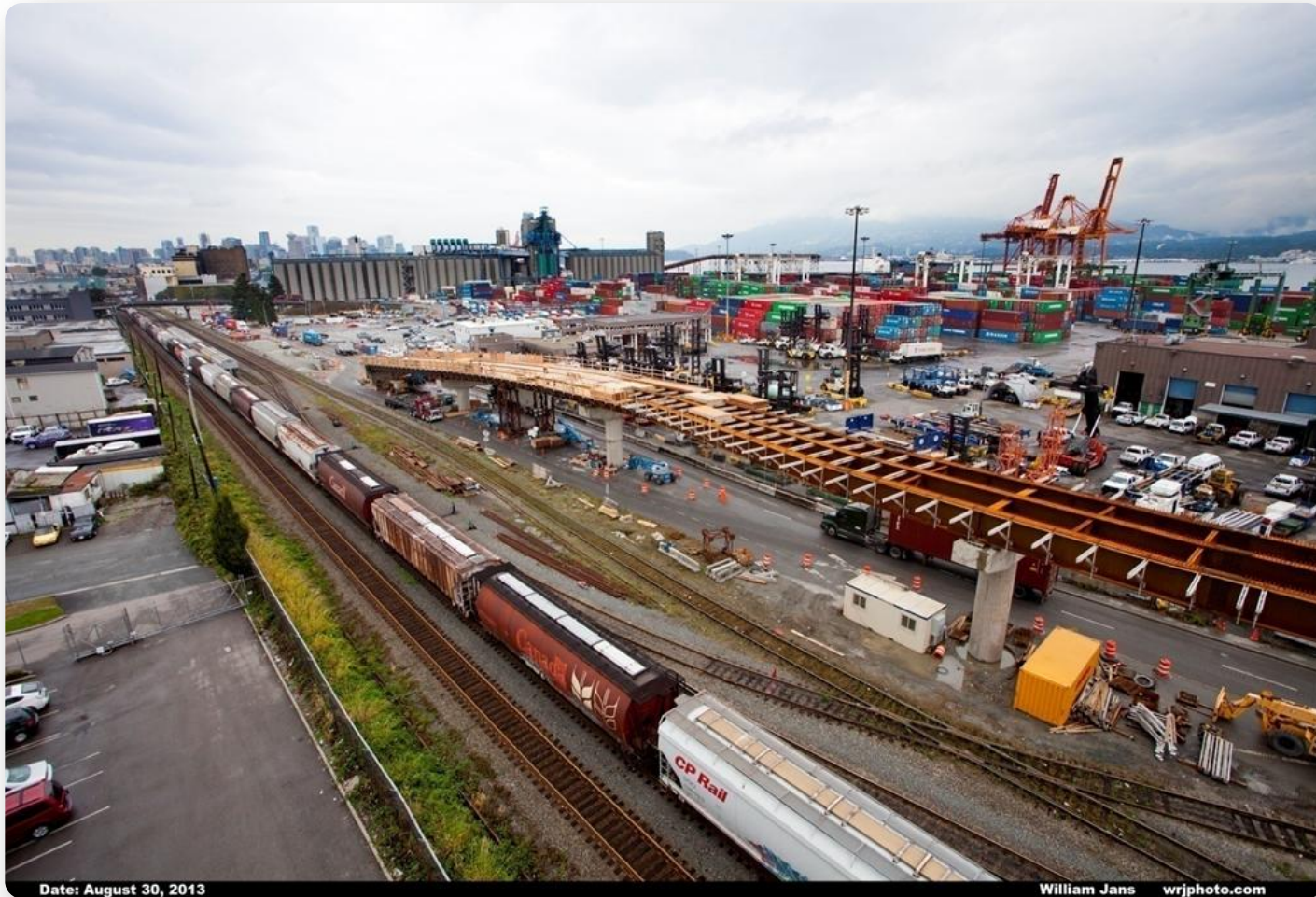


PORT METRO  
vancouver

portmetrovancover.com



# SOUTH SHORE CORRIDOR PROJECT – PROGRESS PHOTOS



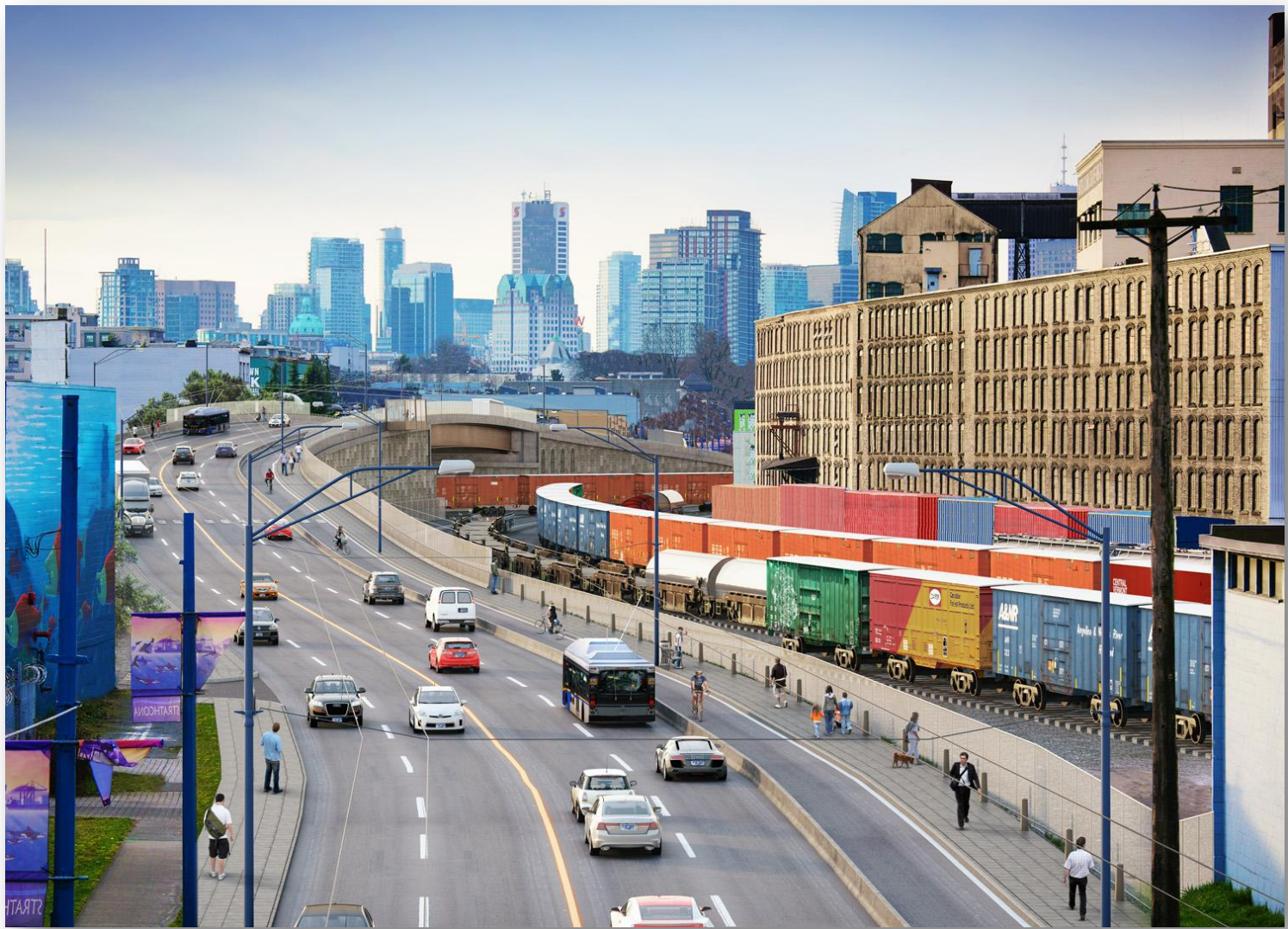
Date: August 30, 2013

William Jans wrjphoto.com



PORT METRO  
vancouver

portmetrovancover.com



# POWELL STREET OVERPASS

## Scope Overview



PORT METRO  
**vancouver**

[portmetrovancover.com](https://portmetrovancover.com)



# ROBERTS BANK RAIL CORRIDOR

- \$307 million
- 9 projects
- Industry investment is \$50 million
- Precursor to major capacity expansions
- Will double rail capacity

investment



PORT METRO  
**vancouver**

# 232 STREET OVERPASS PROJECT – PROGRESS PHOTOS



PORT METRO  
**vancouver**

[portmetrovancover.com](http://portmetrovancover.com)



# 232 STREET OVERPASS PROJECT – PROGRESS PHOTOS



PORT METRO  
**vancouver**

[portmetrovancover.com](http://portmetrovancover.com)

## 232 STREET OVERPASS PROJECT – PROGRESS PHOTOS



PORT METRO  
**vancouver**

[portmetrovancover.com](http://portmetrovancover.com)



## 232 STREET OVERPASS PROJECT – PROGRESS PHOTOS



PORT METRO  
**vancouver**

[portmetrovancover.com](http://portmetrovancover.com)

# REGIONAL INFRASTRUCTURE INVESTMENT

- Creating Gateway capacity, benefit everyone
- South Fraser Perimeter Road (2014)
  - Supports RBT2
- Port Mann Bridge
- Future priorities:
  - George Massey Tunnel
  - Increased rail crossing capacity over Fraser River



# CONTAINER CAPACITY IMPROVEMENT PROGRAM



- Increase container capacity to meet growth and demand
- Industrial land densification
  - Efficiency gains at existing container facilities
  - Improvements to road and rail infrastructure
- New container terminal



PORT METRO  
vancouver



# DELTAPORT TERMINAL, ROAD AND RAIL IMPROVEMENT PROJECT (DTRRIP)

- Increase capacity to 2.4 million TEU
- Overpass, road improvements, track reconfiguration, new track, within existing footprint
- Overpass construction started March 2013
- Entire project completion early 2015

invest



PORT METRO  
**vancouver**

[portmetrovancover.com](http://portmetrovancover.com)



# DTRRIP – PROGRESS PHOTOS



PORT METRO  
**vancouver**

[portmetrovancover.com](http://portmetrovancover.com)

## DTRRIP – PROGRESS PHOTOS



PORT METRO  
**vancouver**

[portmetrovancover.com](http://portmetrovancover.com)



## DTRRIP – PROGRESS PHOTOS



PORT METRO  
**vancouver**

[portmetrovancover.com](http://portmetrovancover.com)

## PROPOSED ROBERTS BANK TERMINAL 2 PROJECT

- Provide additional capacity of 2.4 million TEU per year
- Meet forecast demand until 2030
- Potential construction start in 2017
- Estimated completion 2022-2024

Existing  
Roberts Bank Terminals



# PROPOSED ROBERTS BANK TERMINAL 2 PROJECT

- Provide additional capacity of 2.4 million TEU per year
- Meet forecast demand until 2030
- Potential construction start in 2017
- Estimated completion 2022-2024



# HABITAT BANKING PROGRAM PROPOSED PROJECTS

Maplewood  
Eelgrass Project

Musqueam  
Foreshore Tidal  
Marsh Project

Point Grey Tidal  
Marsh Project

South Arm Jetty  
Tidal Marsh  
Project

McDonald Tidal  
Marsh Project

Glenrose Tidal  
Marsh Project

Albion Tidal Marsh  
Project

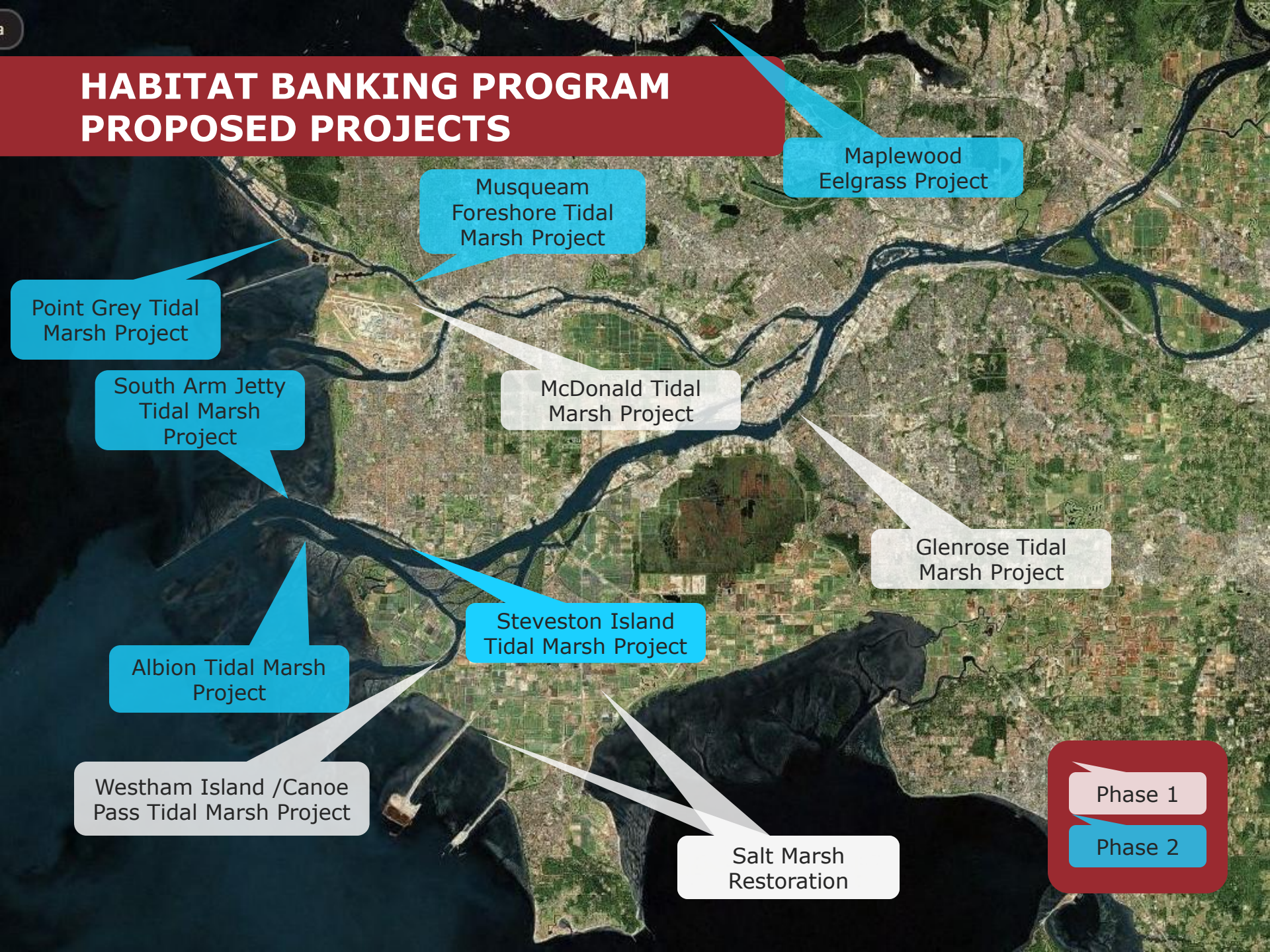
Steveston Island  
Tidal Marsh Project

Westham Island /Canoe  
Pass Tidal Marsh Project

Salt Marsh  
Restoration

Phase 1

Phase 2





# **BOUNDARY BAY SALT MARSH RESTORATION PROJECT: PRIOR TO WORK COMMENCING**





# **BOUNDARY BAY SALT MARSH RESTORATION PROJECT: NEARING COMPLETION**

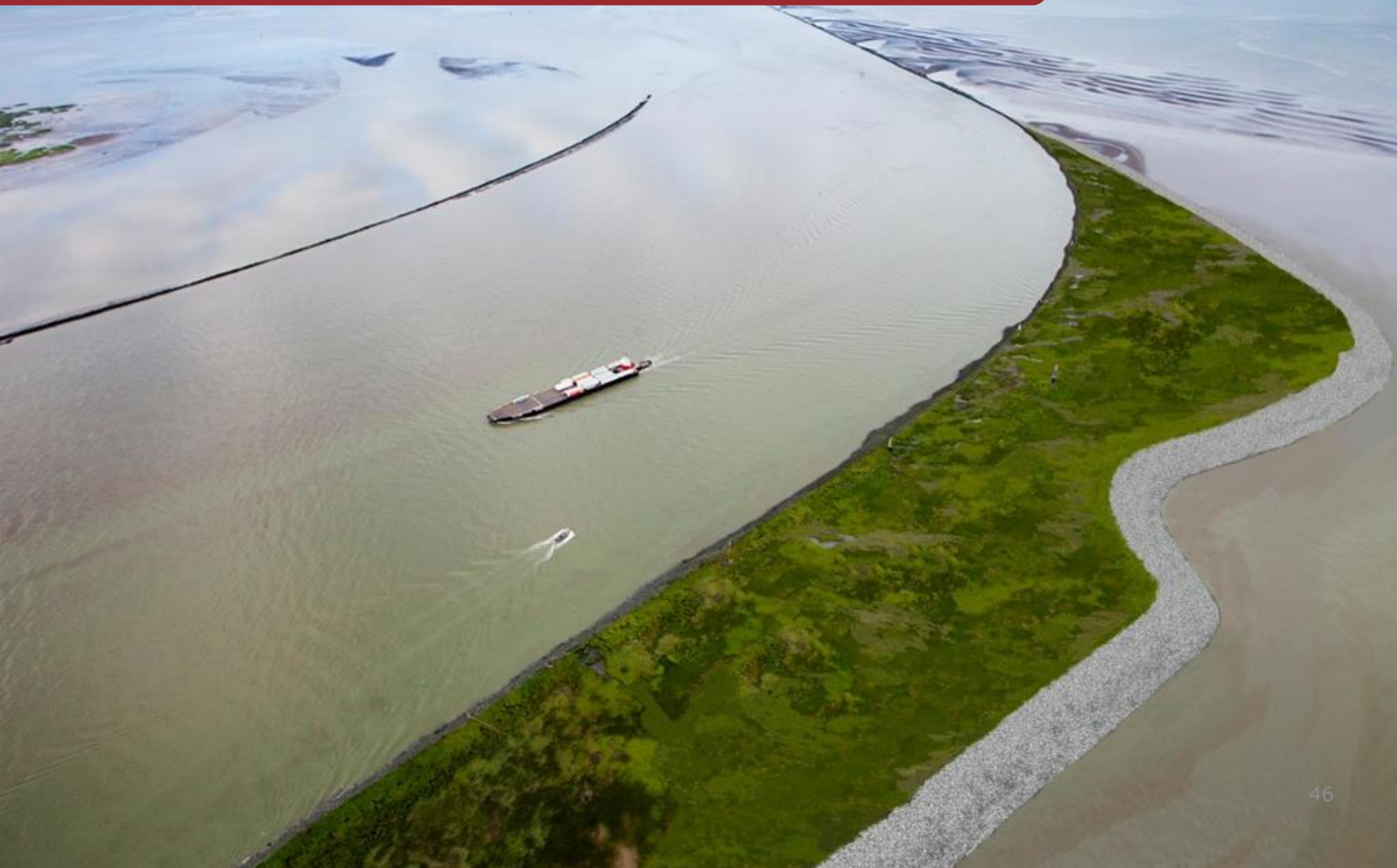




# **SOUTH ARM JETTY TIDAL MARSH PROJECT: CURRENT STATE**



# **SOUTH ARM JETTY TIDAL MARSH PROJECT** **RENDERING OF COMPLETED SITE**





# TENANT-LED PROJECTS

- Marine terminal capacity improvement
- In 2012: nearly 80 applications
- Focus on grain, potash, coal, petroleum, canola



PORT METRO  
vancouver

[portmetrovancover.com](http://portmetrovancover.com)

# COAL: NEPTUNE TERMINAL UPGRADES



- \$80.5 million investment to build new phosphate rock storage and handling facilities
- \$120 million investment to expand coal-handling capacity
- Installation of new stacker/reclaimer to increase terminal efficiency
- Project permitted by PMV in January 2013



# GRAIN: RICHARDSON INTERNATIONAL



- \$120 million investment to expand grain storage capacity
- Increase by an additional 80,000 metric tonnes, to 5 million metric tonnes annually
- Recent \$20 million investment to improve rail receiving capacity
- Increase operating efficiencies to double railcar unloads to 300 cars per day
- Project permitted by PMV in May 2013

# COAL: FRASER SURREY DOCKS



- Proposed direct transfer thermal coal facility
- 2 million metric tonnes per year, increasing to 4 million metric tonnes within 5 years
- Represents 160 unit trains per year, increasing to 320 unit trains
- Currently under application review by PMV



# COAL: WESTSHORE



- Equipment upgrades on existing footprint,
- Enhancing on-site efficiency to increase coal-handling capacity
- New double barrel dumpers will increase capacity to 33 million metric tonnes
- Project announced in February 2013

# PETROLEUM PRODUCTS: VANCOUVER AIRPORT FUEL DELIVERY PROJECT



- Potential opportunity to review and expand capacity to move petroleum products in future
- BC Environmental Assessment Office (BCEAO) is the lead on the harmonized environmental assessment and Port Metro Vancouver is the lead federal agency on the proposed Vancouver Airport Fuel Delivery (VAFD) project.
- BCEAO has decided to postpone a decision on the VAFD project pending the outcome of work underway by the BC Ministry of Environment on land-based spill preparedness and response.
- As part of harmonized process PMV has stopped the clock on the review until all the new materials are received from BCEAO.



An aerial photograph of a mountainous region. A river flows from the top right towards the bottom left, passing through a valley. The mountains are covered in green vegetation, with some peaks showing snow or light-colored rock. A city is visible in the lower part of the image, near the river's mouth. The text "sustainable prosperity" is overlaid in the upper center.

sustainable  
prosperity



PORT METRO  
**vancouver**



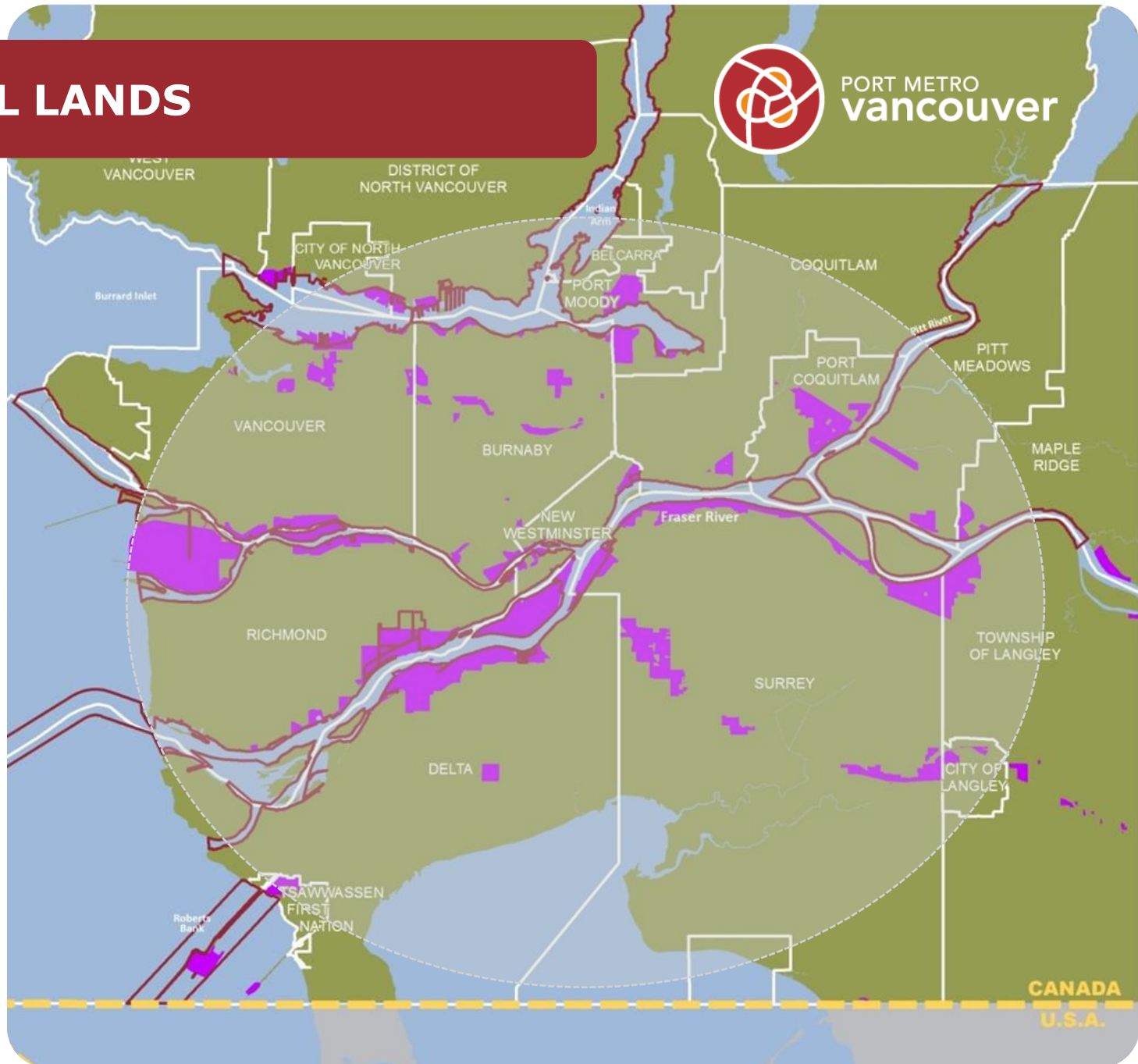
# INDUSTRIAL LANDS

1980

2010



PORT METRO  
**vancouver**





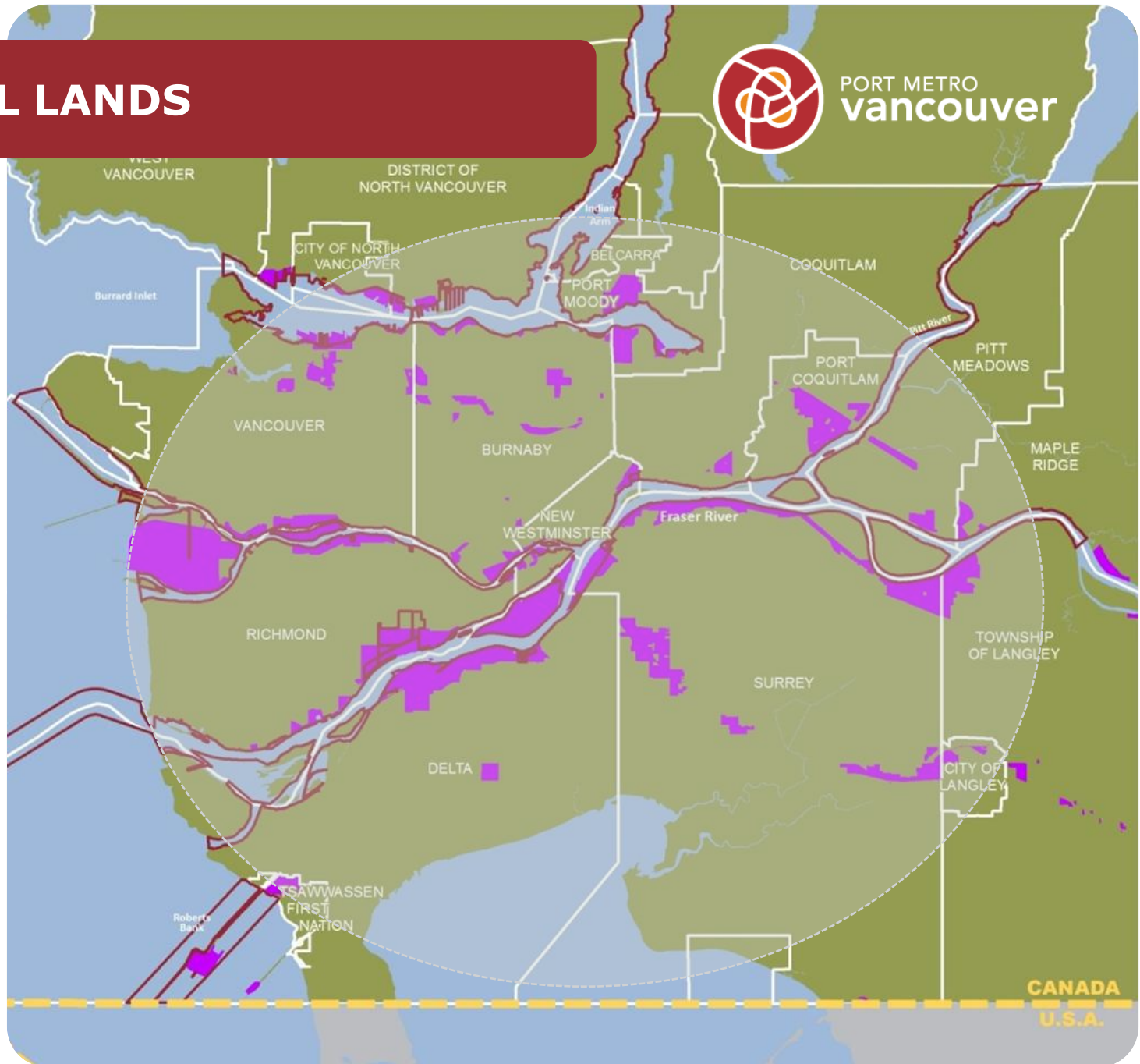
# INDUSTRIAL LANDS

1980

2010



PORT METRO  
**vancouver**



An aerial photograph of Vancouver, British Columbia, Canada. The image shows the city's skyline, including the Vancouver Convention Centre and the Vancouver SkyTrain. The city is situated on a peninsula, with the harbor in the foreground and the mountains in the background. The water is a deep blue, and the sky is a clear, bright blue. The text "sustainable prosperity" is overlaid in the center of the image.

sustainable  
prosperity



PORT METRO  
**vancouver**



# industrial land reserve



PORT METRO  
**vancouver**



sustainable  
prosperity



PORT METRO  
**vancouver**





PORT METRO  
**vancouver**

**QUESTIONS?**

Thank you.