



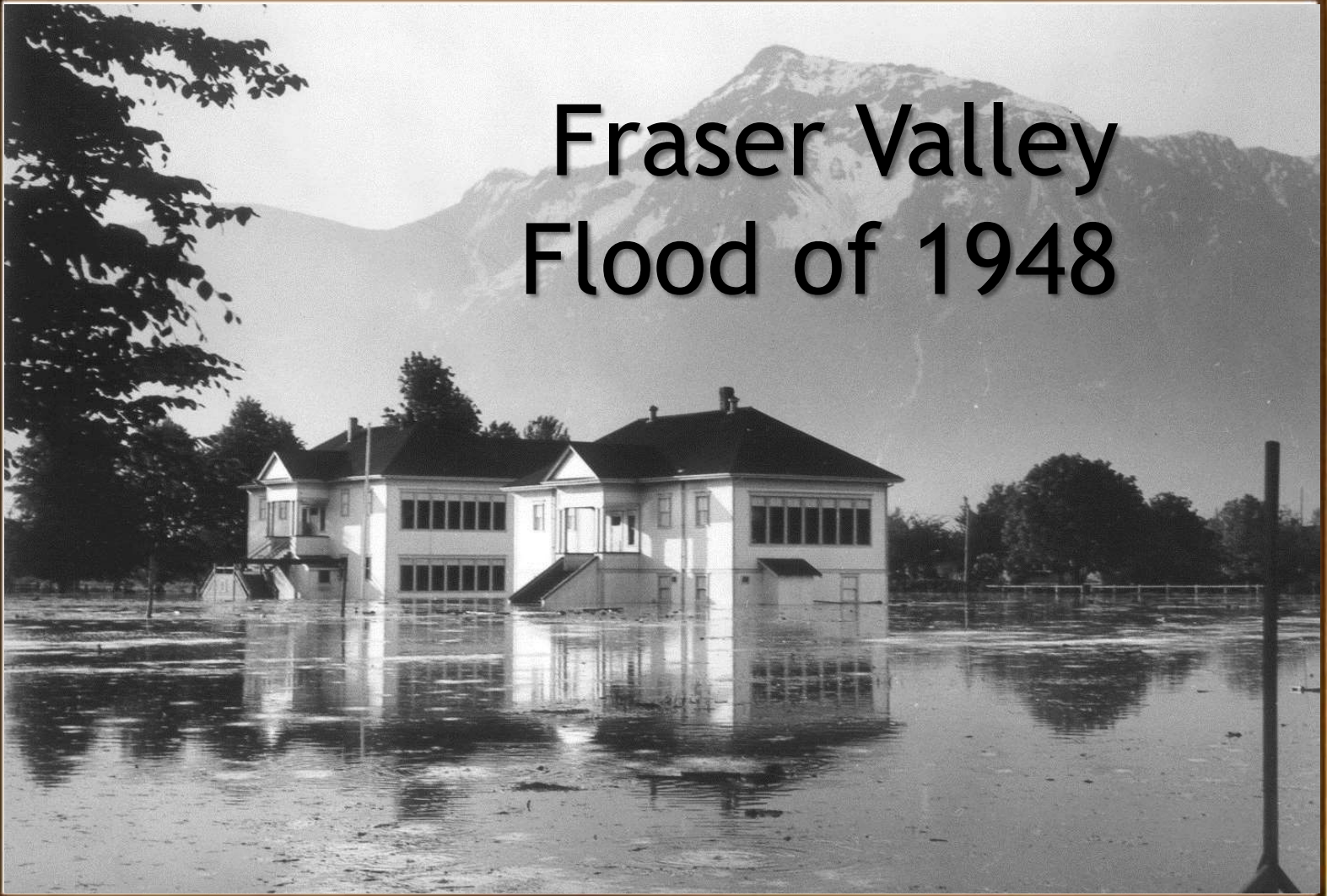


All human plans are  
subject to ruthless  
revision by Nature ...

— Arthur C. Clarke



# Fraser Valley Flood of 1948



# CATASTROPHE

An aerial photograph showing a wide river that has overflowed its banks, inundating a town and the surrounding agricultural fields. The water is a light, milky color, contrasting with the darker, flooded land. The town's grid-like street pattern is partially submerged. In the background, there are rolling hills and a distant shoreline under a cloudy sky.

y near Chilliwack

# CATASTROPHE

... Creativity's Moment.



**Tom McDonald**

**President,  
B.C. Conservative Party**

# Lower Mainland Regional Planning Board

*Established June 21, 1949*

**Approximate Area of the Lower Mainland Regional Planning Board**



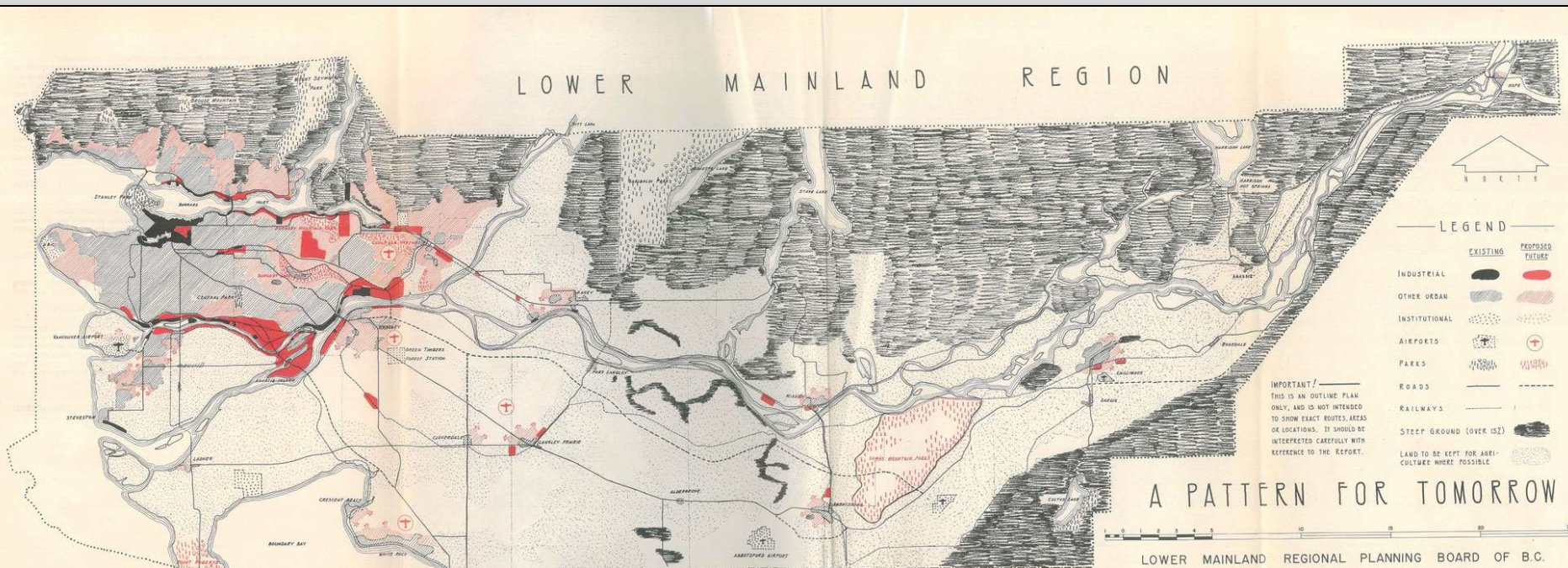


**Jim Wilson**

**Executive Director,  
Lower Mainland Regional Planning Board**

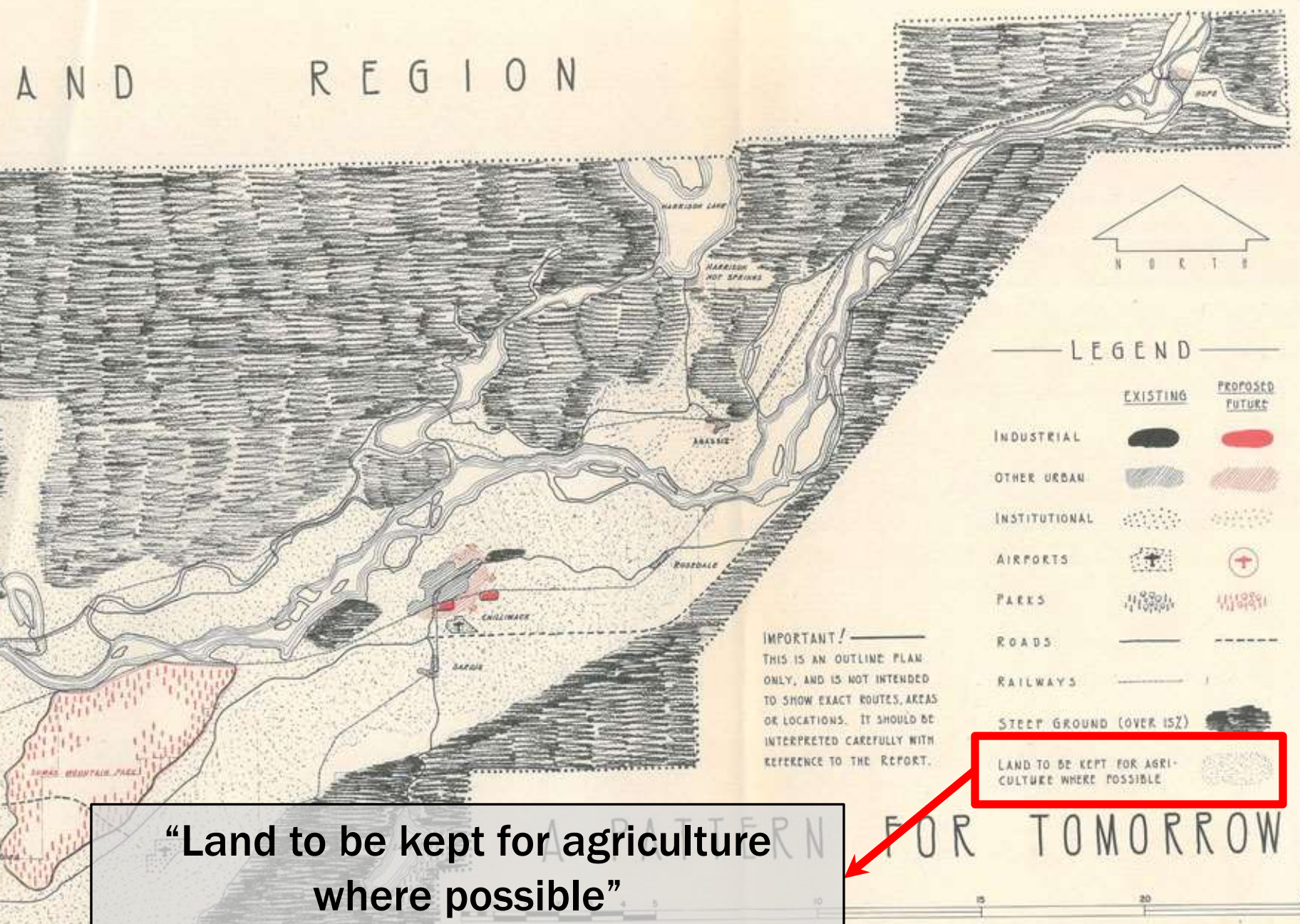
# “A Pattern for Tomorrow:

“A Vision for Metro Vancouver  
for the futuristic date of 1990.”



1952

# AND REGION



## LEGEND

	EXISTING	PROPOSED FUTURE
INDUSTRIAL		
OTHER URBAN		
INSTITUTIONAL		
AIRPORTS		
PARKS		
ROADS		
RAILWAYS		
STEEP GROUND (OVER 15%)		
LAND TO BE KEPT FOR AGRICULTURE WHERE POSSIBLE		

IMPORTANT!  
THIS IS AN OUTLINE PLAN ONLY, AND IS NOT INTENDED TO SHOW EXACT ROUTES, AREAS OR LOCATIONS. IT SHOULD BE INTERPRETED CAREFULLY WITH REFERENCE TO THE REPORT.

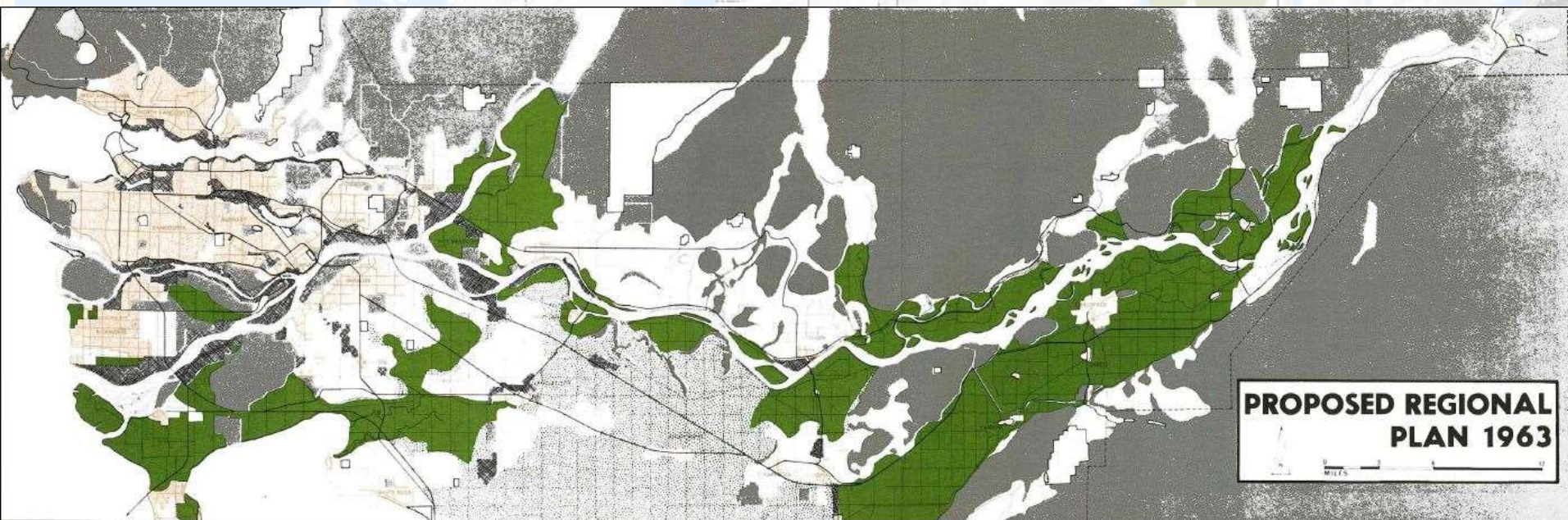
“Land to be kept for agriculture where possible”

# "Cities in a Sea of Green"



1962

# "Cities in a Sea of Green"





**Compact region**

**Sustainable Environment**

**Sustainable economy**

**Complete communities**

**Transport Choices**



**GOAL 1**  
Create a Compact Urban Area

Metro Vancouver's growth is concentrated in compact communities with access to a range of housing choices, and close to employment, amenities and services. Compact transit-oriented development patterns help reduce greenhouse gas emissions and provide the support both for the efficient use of land and an efficient transportation network.



**GOAL 2**  
Support a Sustainable Economy

The land base and transportation systems required to nurture a healthy business sector are protected and supported. This includes supporting regional employment and economic growth. Industrial and agricultural land is protected and complete housing is made available to support the region.



**GOAL 3**  
Protect the Environment and Respond to Climate Change Impacts

Metro Vancouver's vital ecosystem continue to provide the essential of a clean air, water and food. A comprehensive network of habitats is maintained for a wide variety of wildlife and plant species. Protected natural areas provide residents and visitors with diverse recreational opportunities. Strategies also help Metro Vancouver and member municipalities meet their greenhouse gas emission targets, and prepare for and mitigate risks from, climate change and natural hazards.



**GOAL 4**  
Develop Complete Communities

Metro Vancouver's region of communities with a diverse range of housing choices available for residents at any stage of their lives. The distribution of employment and access to services and amenities builds complete communities throughout the region. Complete communities are designed to support walking, cycling and transit, and to foster healthy lifestyles.

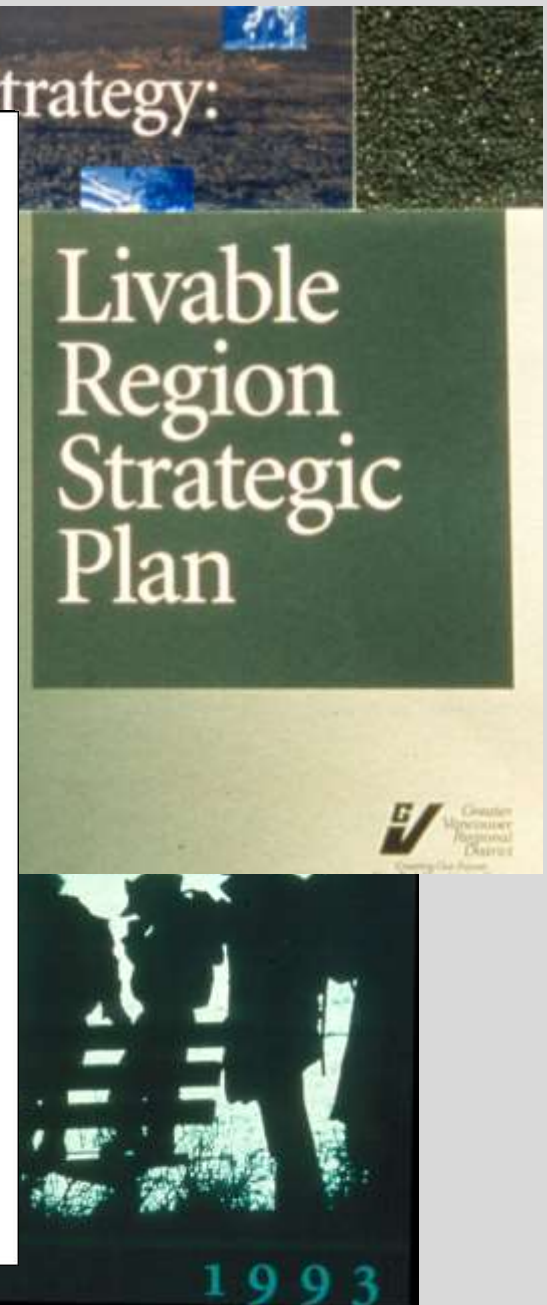


**GOAL 5**  
Support Sustainable Transportation Choices

Metro Vancouver's compact, transit-oriented urban form supports a range of sustainable transportation choices. This pattern of development expands the opportunities for transit, multiple-occupancy vehicles, cycling and walking, encourages active lifestyles, and reduces energy use, greenhouse gas emissions, household dependence on transportation, improves air quality. The region's transit, walking and cycling networks play a vital role in serving and shaping regional development, providing linkages among the region's communities and providing vital goods movement networks.

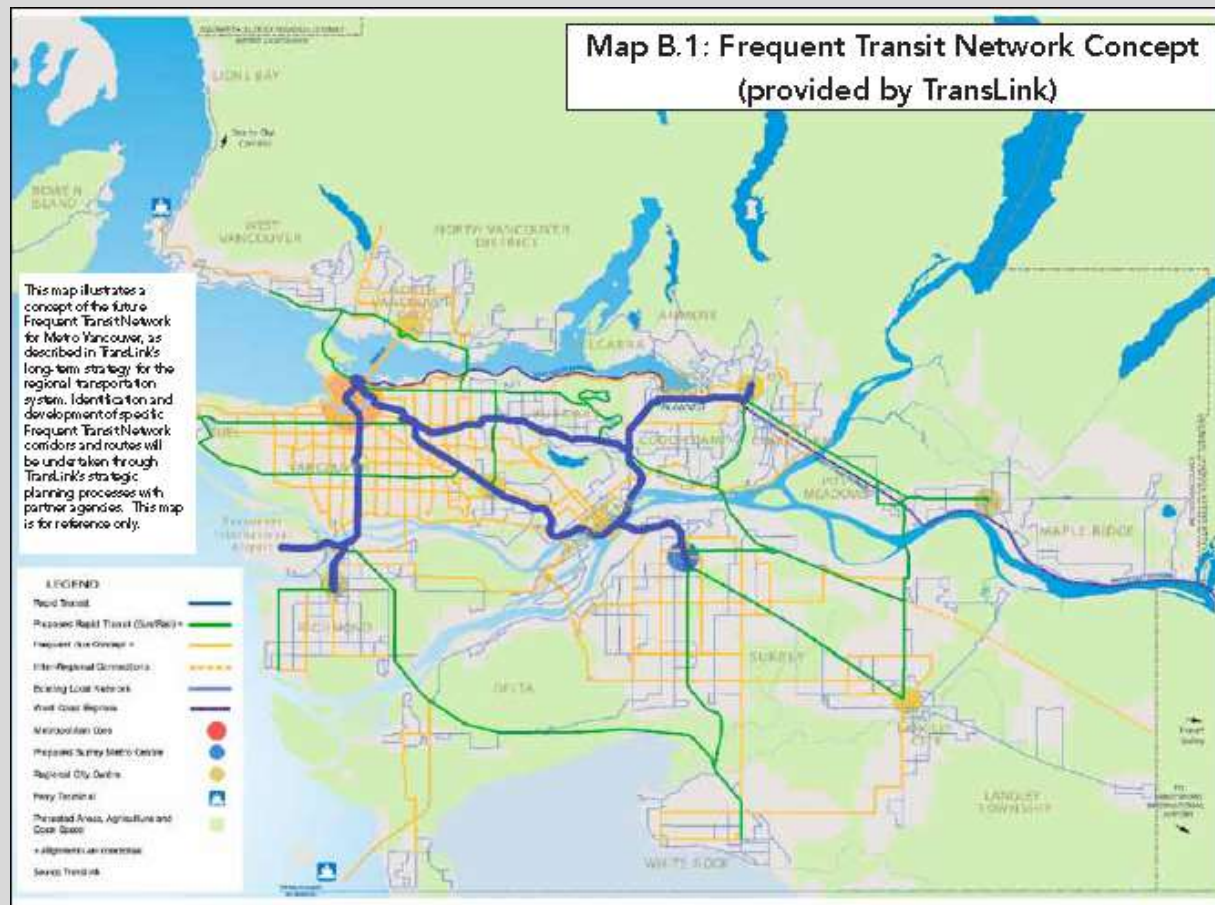


Photo: David Stewart

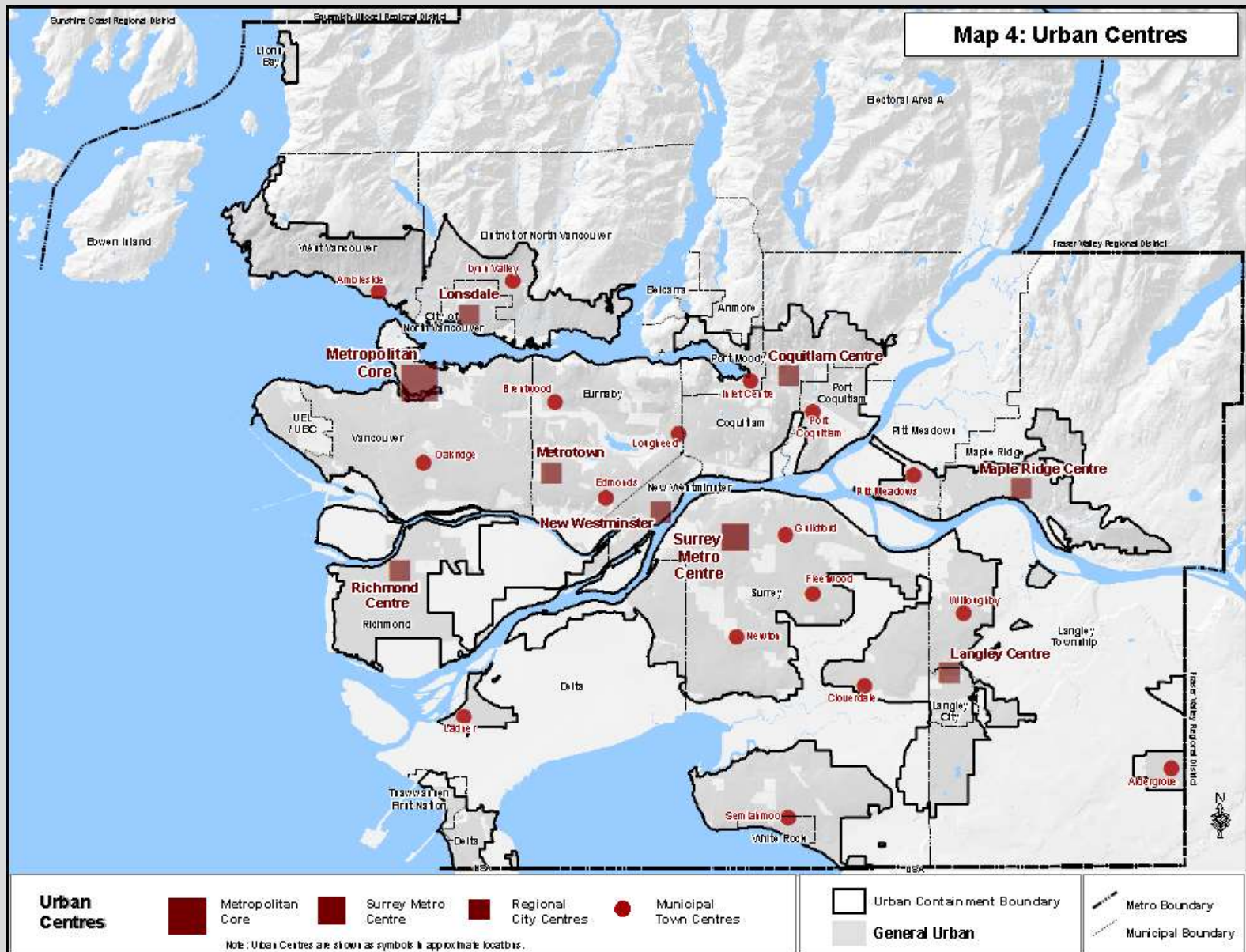


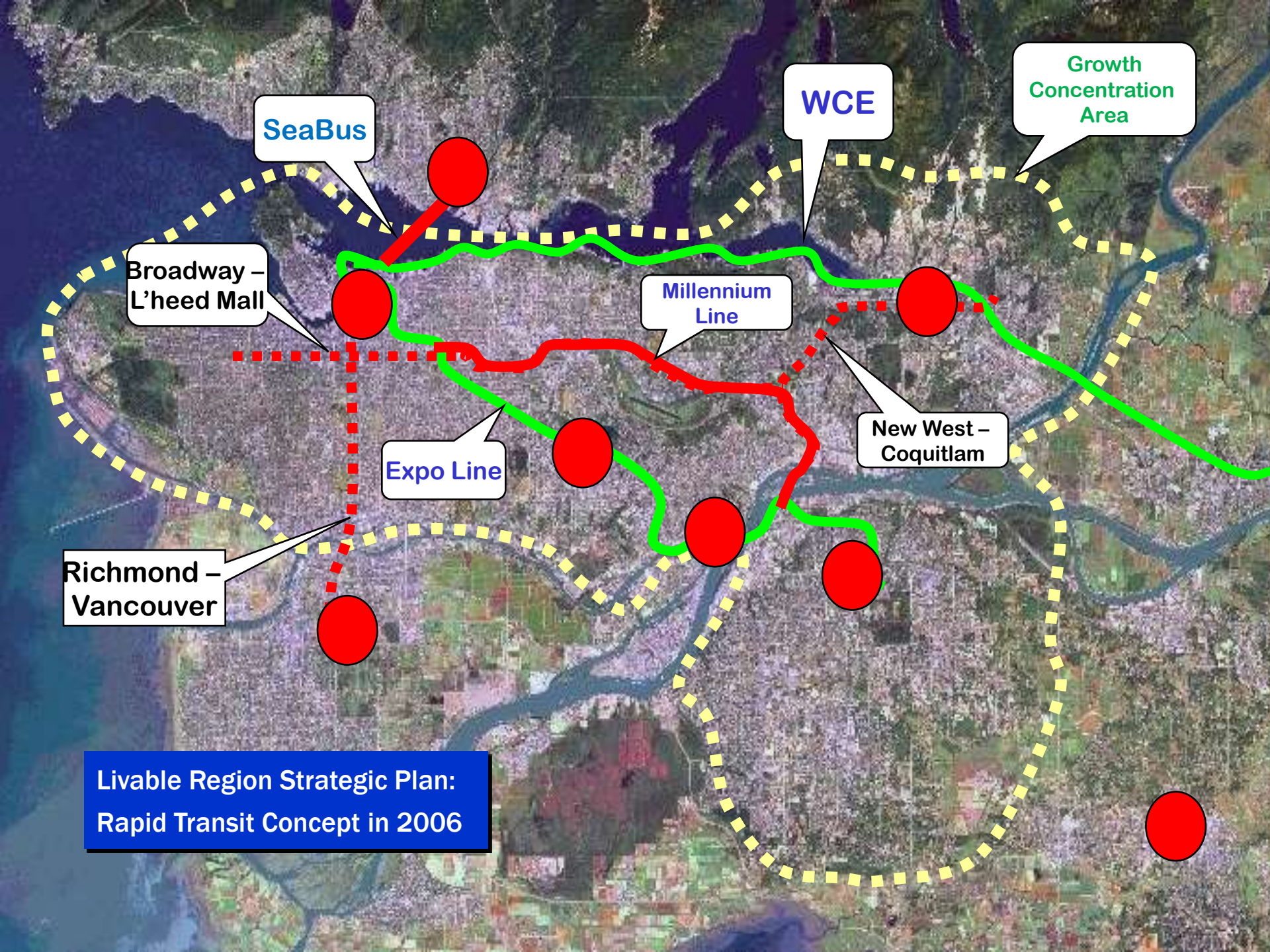
# Metro Vision

Compact, Complete, Connected, Sustainable



**Map 4: Urban Centres**





SeaBus

WCE

Growth  
Concentration  
Area

Broadway -  
L'heed Mall

Millennium  
Line

New West -  
Coquitlam

Expo Line

Richmond -  
Vancouver

Livable Region Strategic Plan:  
Rapid Transit Concept in 2006

So ... how's it's working out?



“The first great modern city in North America”

*- Jeff Tumlin*



# Constraints catalysed creativity:

- How we lived.
- How we moved.

An aerial photograph of False Creek in Vancouver, Canada. The image shows a dense urban landscape with a mix of residential and commercial buildings. A large, white, dome-shaped stadium is prominent in the center-left. The False Creek waterway winds through the city, with several bridges crossing it. A large marina with many sailboats is visible on the right side of the creek. The city extends to the waterfront, with various industrial and commercial structures. The overall scene depicts a vibrant urban environment integrated with a natural waterway.

# False Creek

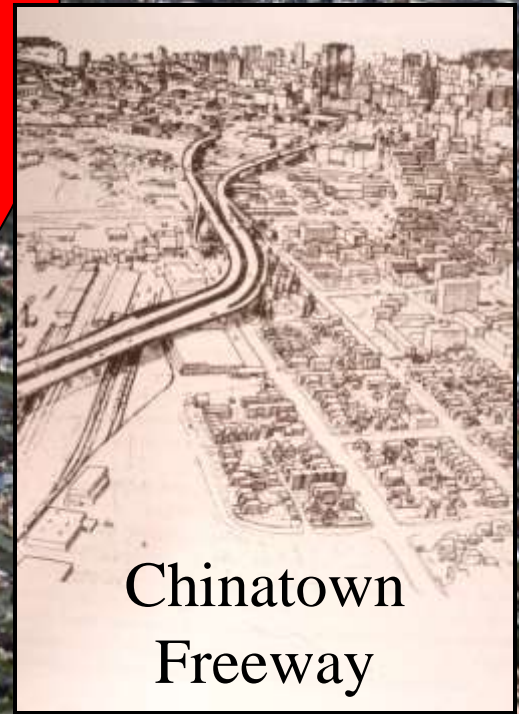
A half century of  
urban innovation.

# Vancouverism





How We Move



Chinatown  
Freeway

# City of Vancouver 1997 Plan



# Key Elements of 1997 Plan

- No increase in road capacity
- Accommodate growth through walking, cycling, and transit
- Support regional TDM measures
- Maintain good truck access
- Support neighbourhood traffic calming
- Provide services & jobs close to home



# Key Elements of 1997 Plan

- **No increase in road capacity**
- Accommodate growth through walking, cycling, and transit
- Support regional TDM measures
- Maintain good truck access
- Support neighbourhood traffic calming
- Provide services & jobs close to home



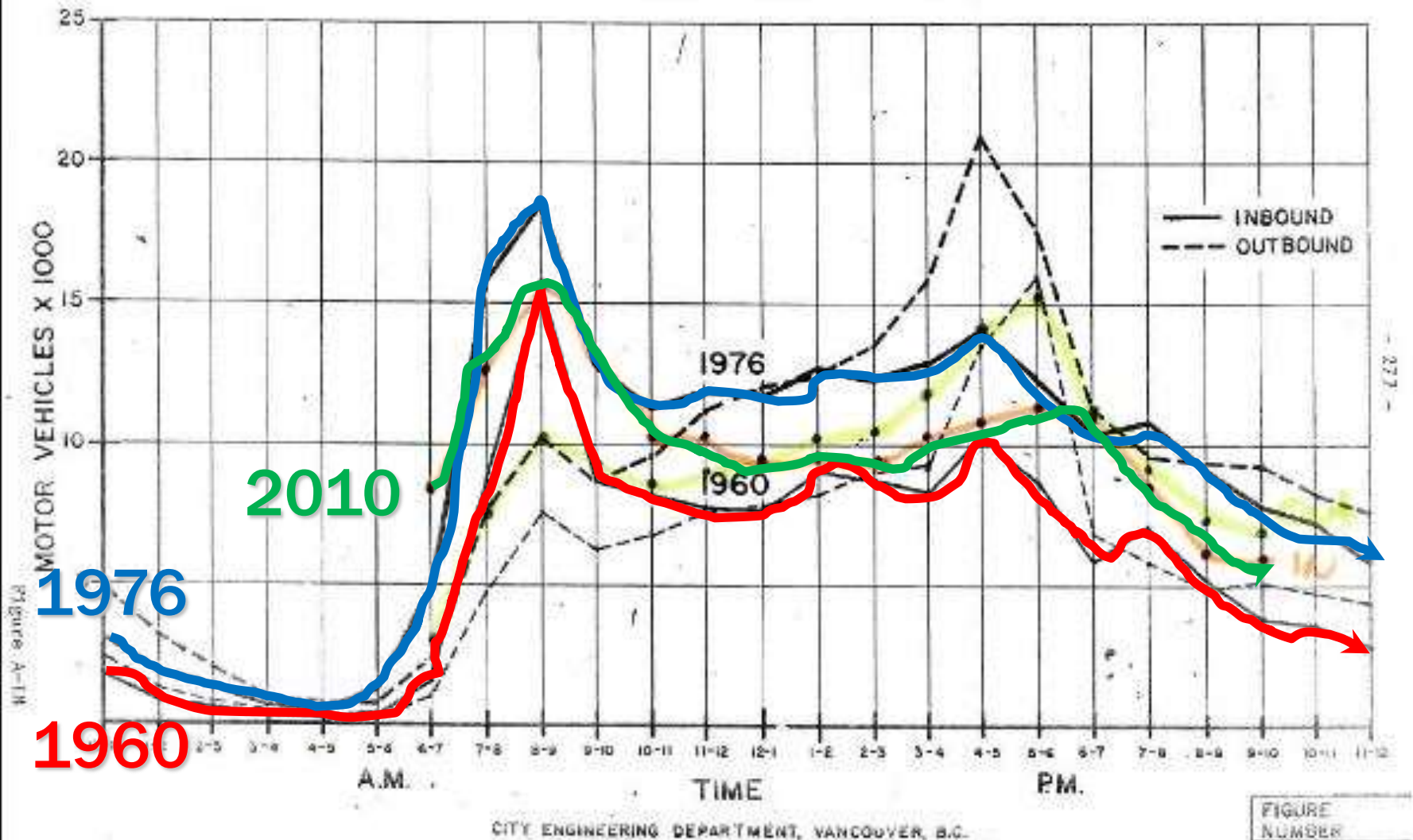
# Central Vancouver Screenline



# Traffic into Downtown Vancouver

1976 75%  
2010 40%  
Oct 2010

TRAFFIC GROWTH ACROSS VANCOUVER C.B.D. CORDON



Traffic volumes in and out of  
Downtown Vancouver today  
are about the same as

**1965**

# Revaluing Parking



# “Urban Pasture” parkette



# Traffic calming / Road diets



Bute Street  
minipark at Haro

# Robson Street



# Cycle Tracks



Dunsmuir Street separated bike lane



**Walking  
City**

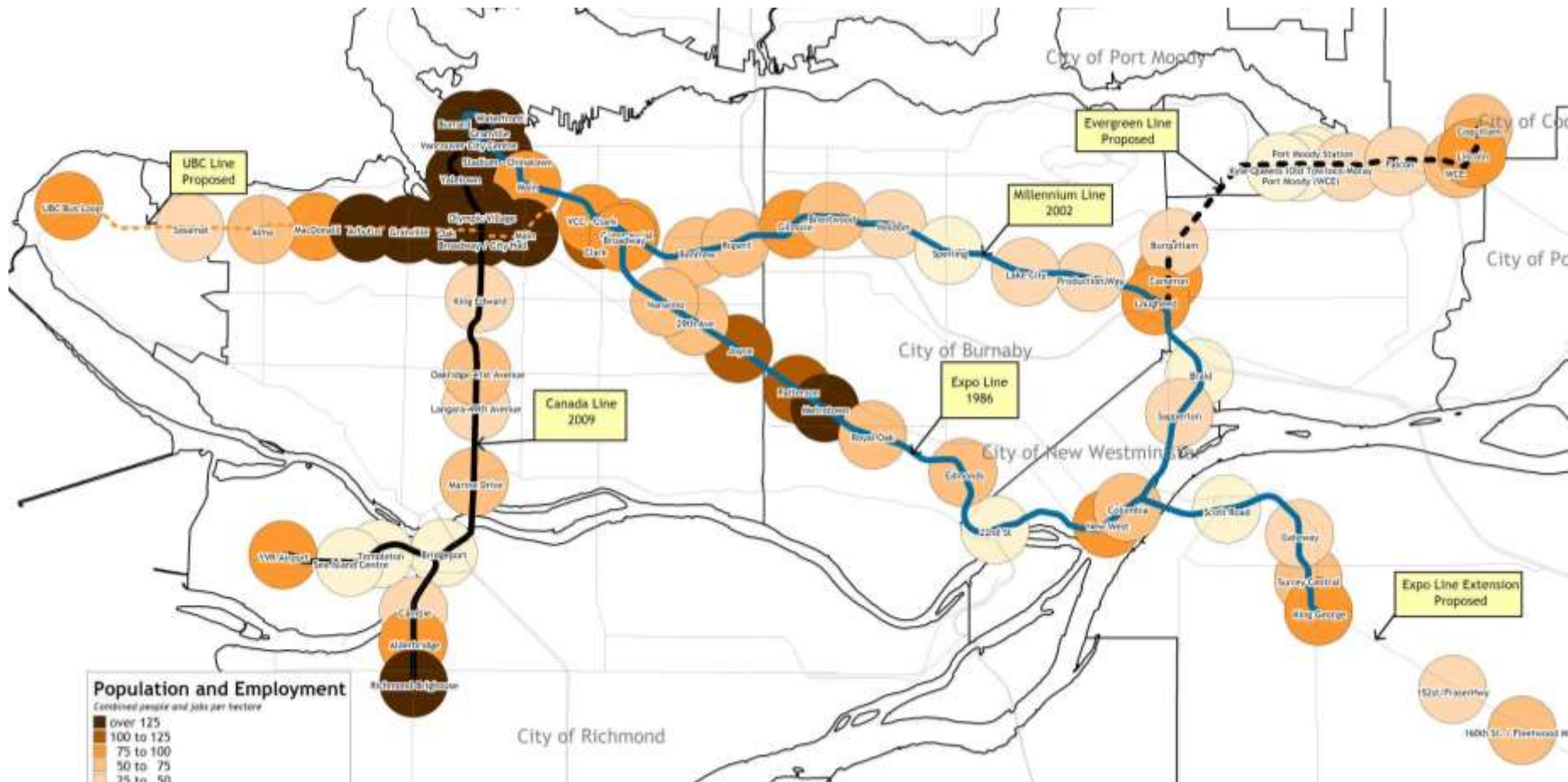
**Northeast  
Sector**

**Burrard Peninsula**

**Transit City**

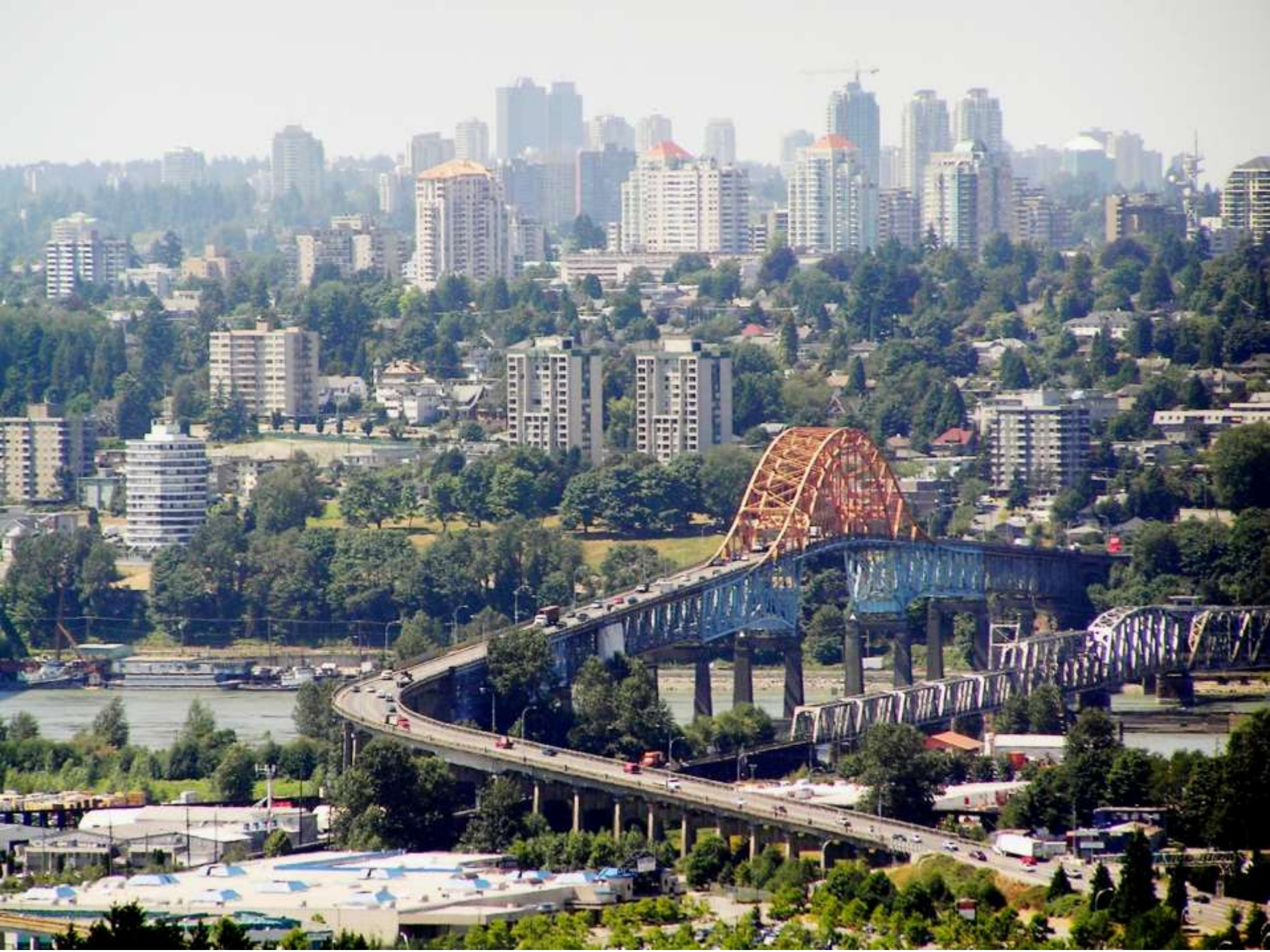
**North Surrey  
North Delta**

# Population & Employment Density around Rapid Transit Stations



# SkyTrain Rapid Transit





# Canada Line







Walking  
City

Northeast  
Sector

Burrard Peninsula

Transit City

North Surrey  
North Delta

Motordom

# Gateway Project

## *Highway Expansions*



# Gateway Project

## *Port Mann Bridge*



**Port Mann Bridge Highway 1**  
Construction 2008-2013  
**New Port Mann Bridge**  
► Reducing Congestion, Improving Transit

Gateway Program  
Public Information:  
[pmsh1project.com](http://pmsh1project.com)  
1-866-999-7641

Thank You  
FOR YOUR PATIENCE

NEWS

# NEW 10-LANE BRIDGE TO REPLACE MASSEY TUNNEL: PREMIER CLARK




# Gateway Project

## *South Fraser*

### *Perimeter Road*

**UBC scientists: Sea level expected to rise in Delta by 1.2 meters by 2010.**



A photograph of a coastal city skyline, likely Vancouver, with several tall skyscrapers and a marina filled with boats. The water is calm, reflecting the buildings. In the foreground, there is a rocky shoreline and a concrete structure. A blue rectangular overlay is positioned in the center-right of the image, containing white text. The entire image is framed by a thick, textured gold border.

The amount of  
sea-level rise in  
False Creek in 100  
years if climate  
change continues  
at current rates.



# Dwight Eisenhower:

In preparing for battle,  
I have always found that  
plans are useless

But planning is  
indispensable.

# Price Tags

---

[pricetags.wordpress.com](http://pricetags.wordpress.com)



